

DURAMAG

Built Value Tough

2018 CONFIDENTIAL UPFITTER PRICE LIST



Service Bodies



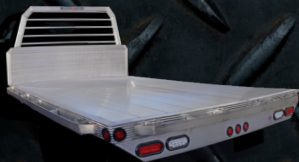
Hauler Bodies



Dump Bodies



Landscape Bodies



Platform Bodies



Van Bodies



Headache Racks

CONTACT INFORMATION

Matt Duffy
Northeast Sales

(207) 310-8271
mduffy@f3mfg.com

Megan Wilson
*Order Processing/Customer
Service*

(207) 660-4700
mwilson@f3mfg.com

Nick McCann
Inside Sales/Customer Service

(207) 660-4700
nick@f3mfg.com



977 West River Road, #3
Waterville, Maine 04901
(207) 660-4700

duramagbodies.com

NEW FULL COLOR OPTION

FULL BODY POWDER COATING

Now you can order your body with the exterior fully powder coated.

Choose from Standard Colors: White, Black, GM Red, Ford Red and Silver. We can order any color you like for a minimal upcharge depending upon color and quantity of bodies.

Custom order colors are **not guaranteed** to be a perfect match and are **non-refundable**. In some cases, powder coating accentuates manufacturing marks (welding, bending, etc.). DuraMag suggests choosing a color other than Black. **While we will powder coat in black, be advised that manufacturing marks may show and that there are no discounts, returns, or reworks available.**

FULL BODY POWDER COATING: No Returns/rework/Discounts on Black or Custom Colors			
Model	Description	UOM	Base Price
FBPC-FB	Full Body Powder Coating (Standard Colors) on Flat Beds	PBF	\$49
FBPC-S	Full Body Powder Coating (Standard Colors) Sides and or Tail Boards on Flats or Hauler Bodies	PBF	\$42
FBPC-LS	Full Body Powder Coating (Standard Colors) on Landscape Bodies	PBF	\$133
FBPC-DB	Full Body Powder Coating (Standard Colors) All Dump Bodies	PBF	\$133
FBPC-DX	Full Body Powder Coating (Standard Colors) Non Skirted Haulers	PBF	\$49
FBPC-DS	Full Body Powder Coating (Standard Colors) Skirted Haulers	PBF	\$91

STANDARD SERIES PICKUP DELETE BED

Standard Features:

- ALL ALUMINUM Box Tube
- Heavy 2" x 3" Long Sills
- 24" OC Cross Members 2" x 3"
- Premium G-Tube Perimeter Frame
- Tongue-and-Groove Extruded Aluminum Flooring
- Extruded Aluminum Headboard with Accessory Track
- LED Lights Fully Pre-Wired Inside Box Tube
- Stake Pockets & Rub Rail (Both Side & Rear)
- OEM Plug & Play Wiring Harnesses **(Adaptors sold separately)*



PICKUP DELETE MODELS

For Overall Measurement: Add 5" to width and 2.5" to length for Stake Pockets and Rub Rails

Model	Fit	Deck W x L (incl. HB)	Long Sills	Weight (Lbs.)	Base Price
TB08407F	Ford '99-Current	81"x 84"	37.5"	262	\$2,184
TB08407G	GM '99-Current	81"x 84"	42"	262	\$2,184
TB08407GBK	GM '07-Current using Factory Brackets	81"x 84"	42"	282	\$2,332
TB08407FBK	Ford '99-'16 Fast Install Package	81"x 84"	37.5"	272	\$2,332
TB08407FBK17	Ford 17'-Current Fast Install Package	81"x 88"	38"	272	\$2,332
TB08407U	Universal Short Bed	81"x 84"	Loose	262	\$2,184
TB08485F	Ford '99-Current	81"x 102"	37.5"	292	\$2,449
TB08485G	GM '99-Current	81"x 102"	42"	292	\$2,449
TB08485GBK	GM '07-Current using Factory Brackets	81"x 102"	42"	312	\$2,597
TB08485FBK	Ford '99-'16 Fast Install Package	81"x 102"	37.5"	302	\$2,597
TB08485FBK17	Ford 17'-Current Fast Install Package	81"x 106"	38"	302	\$2,597
TB08485U	Universal 8 ft. Bed	81"x 102"	Loose	292	\$2,449
TB09785G	GM '99-Current (Dually)	92"x 102"	42"	339	\$2,524
TB09785GBK	GM '07-Current using Factory Brackets (Dually)	92"x 102"	42"	359	\$2,673
TB10185F	Ford '99-Current (Dually)	97"x 102"	37.5"	358	\$2,575
TB10185G	GM '99-Current (Dually)	97"x 102"	42"	358	\$2,575
TB10185GBK	GM '07-Current using Factory Brackets (Dually)	97"x 102"	42"	368	\$2,741
TB10185FBK	Ford '99-'16 Fast Install Package (Dually)	97"x 102"	37.5"	358	\$2,741
TB10185FBK17	Ford 17'-Current Fast Install Package (Dually)	97"x 106"	38"	358	\$2,741
TB10107F	Ford '99-Current Short Bed (Dually)	97"x 84"	37.5"	344	\$2,741
TB10107FBK	Ford '99-16 Fast Install Package Short Bed (Dually)	97"x 84"	37.5"	344	\$2,741
TB10107FBK17	Ford '17-Current Fast Install Package Short Bed (Dually)	97"x 88"	38"	344	\$2,741

Note: Fast Install Package is Non-Dumping Applications Only

STANDARD SERIES CAB CHASSIS BED

Standard Features:

- ALL ALUMINUM Box Tube
- Heavy 2" x 3" Long Sills
- 24" OC Cross Members 2" x 3"
- Premium G-Tube Perimeter Frame
- Tongue-and-Groove Extruded Aluminum Flooring
- Extruded Aluminum Headboard with Accessory Track
- LED Lights Fully Pre-Wired Inside Box Tube
- OEM Plug & Play Wiring Harnesses **(Adaptors sold separately)*
- Stake Pockets & Rub Rail (Both Side & Rear)



CAB CHASSIS MODELS

For Overall Measurement: Add 5" to width and 2.5" to length for Stake Pockets and Rub Rails

Model	Fit	Deck W x L (incl. HB)	Long Sills	Weight (Lbs.)	Base Price
TB08495	Ford/Dodge SRW	81" x 114"	34"	319	\$2,514
TB09795	Ford/Dodge/GM DRW	92" x 114"	34"	355	\$2,612
TB10195	Ford/Dodge/GM DRW	97" x 114"	34"	365	\$2,876
TB09711	Ford/Dodge/GM DRW	92" x 132"	34"	411	\$3,318
TB10111	Ford/Dodge/GM DRW	97" x 132"	34"	432	\$3,318
TB09712	Ford/Dodge/GM DRW	92" x 144"	34"	457	\$3,318
TB10112	Ford/Dodge/GM DRW	97" x 144"	34"	472	\$3,359

ANTI-RATTLE STAKE BODY SYSTEMS

30" or 40" Rack System

Standard Features:

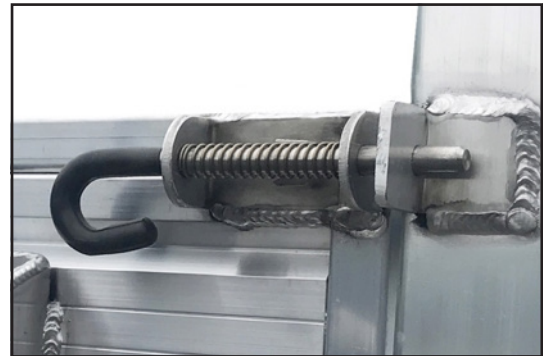
- Square Headboard w/Expanded Metal Window
- All aluminum rack sections with Stainless Steel locking Spring pin
- Anti-Rattle HDPE shims with Stainless rivets on all stakes
- Aluminum spring loaded release lever - no fail
- HDPE Body Blocks that protect against rack abrasion
- Anti-Rattle rubber bumpers
- HD version includes 1" x 1" Perimeter tube frame around all rack sections.



Aluminum Spring Loaded Lever



Anti-Rattle HDPE Shim



Stainless Steel Locking Spring Pin

RACK BODY SYSTEMS			
Item#	Description	UOM	Price
RBS30	30" Rack Body System Includes Sq Headboard w/Window	PBF	\$122
RBS40	40" Rack Body System Includes Sq Headboard w/Window	PBF	\$141
SBRACK30	Rack Sides Only 30" - Fixed Rear Posts & Sq Headboard w/Window	PBF	\$113
SBRACK40	Rack Sides Only 40" - Fixed Rear Posts & Sq Headboard w/Window	PBF	\$132
TAHINGE	Barn Door Style Rear Racks w/Polished SS Locking Bar	PBF	\$1,071

RACK BODY SYSTEMS: HD VERSIONS			
Item#	Description	UOM	Price
HDRBS30	Heavy Duty 30" Rack Body System With 1" Perimeter Frame Includes Sq Headboard w/Window	PBF	\$150
HDRBS40	Heavy Duty 40" Rack Body System With 1" Perimeter Frame Includes Sq Headboard w/Window	PBF	\$169
HDSBRACK30	Heavy Duty Rack Sides Only 30" - Fixed Rear Posts & Sq Headboard w/Window	PBF	\$141
HDSBRACK40	Heavy Duty Rack Sides Only 40" - Fixed Rear Posts & Sq Headboard w/Window	PBF	\$160

HD SERIES TRUCK BED

HD Standard Features:

- ALL ALUMINUM Extruded Box Tubing
- Heavy Duty Long Sills and Rear Light Bar 2" x 5"
- Cross Members 12" OC 2" x 3"
- Premium G-Tube Perimeter Frame
- 3/8" x 3" Rub Rail & Stake Pockets (both side & rear)
- Heavy Rub Rail Reinforcement (between stake pockets)
- LED Lights Fully Pre-wired Inside Box Tube
- Tongue-and-groove extruded aluminum flooring
- Heavy duty extruded aluminum headboard with "below floor" gusset
- Choice of 16" x 30" expanded metal window OR headboard cross bars
- OEM Plug & Play Wiring Harnesses *(Adaptors sold separately)



HD TRUCK BED MODELS

For Overall Measurement: Add 5.5" to width and 2.75" to length for Stake Pockets and Rub Rails

Model	Deck W x L (incl. HB)	Long Sills	Weight (Lbs.)	Base Price
TB09510HD	95" x 124"	34"	450	\$4,755
TB09512HD	95" x 148"	34"	541	\$5,365
TB09514HD	95" x 172"	34"	627	\$6,083
TB09516HD	95" x 196"	34"	719	\$6,800
TB09518HD	95" x 220"	34"	810	\$7,697
TB09520HD	95" x 244"	34"	900	\$8,415
TB09522HD	95" x 268"	34"	990	\$9,276
TB09524HD	95" x 292"	34"	1080	\$10,120

FLAT BED EXPANDED OPTIONS/ACCESSORIES LIST

Item#	Description	UOM	Price
DHPREP	Dump Hoist Prep, upgrade 2X3 to 2X6" Long Sills & Rear Bumper (Requires 12OC)	PBF	\$59
DHPREP-HD	Dump Hoist Prep, upgrade 2X5 to 2X6" Long Sills & Rear Bumper (Requires 12OC)	PBF	\$35
DHPREP-SOL	Dump Hoist Prep, Steel Long Sills Overlay (Shipped Loose)	SET (4)	\$211
DHPREP-SOI	Dump Hoist Prep, Steel Long Sills Overlay (Installed)	SET (4)	\$274
LS4001HD	Upgrade to 4" Heavy Duty Long Sills	PBF	\$32
LS5001HD	Upgrade to 5" Heavy Duty Long Sills	PBF	\$39
45CORNERS	45° Angle Rear Corners	SET (2)	\$175
TAPERFRONT	45° Angle Front Corners (Dually Bodies Only)	SET (2)	\$175
HDRAIL	1/2" x 2" Heavy Duty Rub Rail	PBF	\$28
HDRAIL338	3/8" x 3" HEAVY DUTY RUB RAIL	PBF	\$28
HDRAIL350	1/2" x 3" HEAVY DUTY RUB RAIL	PBF	\$41

FLAT BED EXPANDED OPTIONS/ACCESSORIES LIST, CONTINUED			
Item#	Description	UOM	Price
12OC	12" OC Cross-members (Standard on HD Models)	PBF	\$32
6OC	6" OC Cross-members	PBF	\$77
CS615T-9 EMDA	9' Champion Scissor Hoist - Push Control Double Acting - Installed	EA	\$2,870
CS615T-11 EMDA	12' Champion Scissor Hoist - Push Control Double Acting - Installed	EA	\$2,953
CS620T-15 EMDA	15' Champion Scissor Hoist - Push Control Double Acting - Installed	EA	\$3,849
Item#	Posts	UOM	PRICE
WRPOSTS	Welded Rear Posts, Welded on Top of Body	SET (2)	\$229
WRPOSTSHD	HD Welded Rear Posts, Welded into Structure of Body	SET (2)	\$321
LGPREP	Lift Gate Prep, 6" Rear Extrusion and Welded Rear Posts (Deletes Stake Pockets, Rub Rail, All Rear Lights & Barn Doors, When Applicable)	PKG	\$639
Item#	Cab Shields	UOM	Price
CABSHIELD12	12" Cab Shield .125 w/.188 Ears Mill Finish Aluminum	EA	\$521
CABSHIELD24	24" Cab Shield .125 w/.188 Ears Mill Finish Aluminum	EA	\$598
CABSHIELD36	36" Cab Shield .188 Mill Finish Aluminum	EA	\$673
CABSHIELD42	42" Cab Shield .188 Mill Finish Aluminum	EA	\$718
TARPCOVER	6" Extruded Aluminum Tarp Cover	EA	\$193
Item#	Headboard Options	UOM	Price
SQHDBRD	Square Corner Headboard (Standard on HD Models)	EA	\$175
EMHDBRD	Expanded Metal Window in Headboard	EA	\$229
STROBES	6" Amber Oval Strobes	SET (2)	\$69
3"EXTRAHBHEIGHT	3" Additional Headboard Height	EA	\$42
8"EXTRAHBHEIGHT	8" Additional Headboard Height	EA	\$85
WIRESTUB	Stub Wires in Headboard for Strobe Light	SET (2)	\$91
REMHBB	Removable Headboard Option	EA	\$466
LHBOO1	4 Extra Lights in Headboard, 2 STT, 2 Back-Up	SET (4)	\$235
LBHOO2	2 Integrated, Rubber Mount, SST/Backup LED's in Headboard	SET (2)	\$204
Item#	Sides & Tailboards	UOM	Price
SIDEBOARD16	16" Aluminum Side Boards (All Models)	PBF	\$85
TA16100	16" Aluminum Tail Board (All Models)	EA	\$440
SIDEBOARD10	10" Aluminum Side Boards (All Models)	PBF	\$68
TA10100	10" Tail Board (All Widths)	EA	\$338
TA10HINGE	Hinged 10" Tailgate with Spring Latches	EA	\$497
SIDEBOARD16-L	16" Aluminum Side Boards Loose with Install Kit	PBF	\$85
TA16100-L	16" Aluminum Tail Board Loose with Install Kit	EA	\$440
SIDEBOARD10-L	10" Aluminum Side Boards Loose with Install Kit	PBF	\$68
TA10100-L	10" Tail Board Loose with Install Kit	EA	\$338
TA16HINGE	Hinged 16" Tail Gate with Spring Latches	EA	\$546
FDSIDESONLY	Hinged 16" Sides Only (installed)	PBF	\$121
SB2PIECE	2 Piece Sides	SET (2)	\$229
SB2PIECETB	2 Piece Tail Board	EA	\$156
FDSIDES	Hinged 16" Sides & Tail Boards (All Models)	PBF	\$181

Rack Body Systems include Square Headboard with Expanded Metal Window and Interlocking Sides and Tailboard			
Item#	Rack Body Systems	UOM	Price
RBS30	30" Rack Body System Includes Sq Headboard w/Window	PBF	\$122
RBS40	40" Rack Body System Includes Sq Headboard w/Window	PBF	\$141
SBRACK30	Rack Sides Only 30" - Fixed Rear Posts & SQ Headboard w/Window	PBF	\$113
SBRACK40	Rack Sides Only 40" - Fixed Rear Posts & SQ Headboard w/Window	PBF	\$132
TAHINGE	Barn Door Style Rear Racks w/Polished SS Locking Bar	EA	\$1,071
Item#	Rack Body Systems: Hd Versions	UOM	PRICE
HDRBS30	Heavy Duty 30" Rack Body System With 1" Perimeter Frame Includes Sq Headboard w/Window	PBF	\$150
HDRBS40	Heavy Duty 40" Rack Body System With 1" Perimeter Frame Includes Sq Headboard w/Window	PBF	\$169
HDSBRACK30	Heavy Duty Rack Sides Only 30" - Fixed Rear Posts & SQ Headboard w/Window	PBF	\$141
HDSBRACK40	Heavy Duty Rack Sides Only 40" - Fixed Rear Posts & SQ Headboard w/Window	PBF	\$160
Item#	Cargo Racks	UOM	Price
REARRACK	Removable Rear Rack (Bolts Through Top of Side Pack)	EA	\$546
CANTILEVER368	36" Cantilever Rack For 8' Bed (Removable Rear & Center Bar)	EA	\$1,126
CANTILEVER369	36" Cantilever Rack For 9' Bed (Removable Rear & Center Bar)	EA	\$1,182
CANTILEVER3611	36" Cantilever Rack For 11' Bed (Removable Rea & Center Bar)	EA	\$1,276
CANTILEVER48EX	Upgrade to 48" Cantilever Rack	EA	\$79
CANTILEVERADD6	Add 6" in overall Height to Cantilever Rack	EA	\$140
Item#	Tie Down Options	UOM	Price
3608	Aluminum Winch Track, 10' Welded On	EA	\$254
38375	3" x 3/8" Flat Under Body Tie Rail (12' And Under)	EA	\$181
1020	4" Standard Winch	EA	\$49
423021	4" x 30' Strap with Flat Hook	EA	\$32
37031	Chrome Winch Bar	EA	\$24
TIERAIL	1/4" x 2" Flat Bar Underbody Tie Rail	PBF	\$10
RING4KSS	RECESSED SS D-RING, Spring Loaded, 4.4k Rating	EA	\$51
RATCHET	2" Bolt-On Ratchet Strap	EA	\$138
LDDRING	Light Duty D-Ring (Installed)	EA	\$18
ETRACKA	10' Aluminum E-Track (Welded)	EA	\$160
Item#	Misc Options	UOM	Price
GNHATCH-L	Gooseneck Hatch w/Cover (Shipped Loose)	EA	\$144
GNHATCH-I	Gooseneck Hatch w/Cover (Installed)	EA	\$181
ICCBMPR	ICC Bumper	EA	\$418
FENKITSRW	Single Wheel Fender Kit	EA	\$363
FENKITDRW	Dually Fender Kit	EA	\$455
GRABHANDLE	Aluminum Grab Handle	EA	\$65
MUDFLAPBRCKT	Aluminum Mud Flap Brackets	SET (2)	\$37
CAFUELFILL	Cast Aluminum Fuel Fill *Dealer to Supply Location*	EA	\$120
CAPLATEHOLDER	Recessed Cast Aluminum License Plate Holder	EA	\$138
Item#	Apron Options	UOM	Price
APRON10	Rear Apron, 10" Diamond Plate	EA	\$272
APRON12	Rear Apron, 12" Diamond Plate	EA	\$309
APRON14	Rear Apron, 14" Diamond Plate	EA	\$309
STEP10	10" Rear Step (Requires Apron Option)	EA	\$491

RACK BODY SYSTEMS, CONTINUED			
Item#	Tool Boxes	UOM	Price
UB141224	14 x 12 x 24 Under Body Box	EA	\$418
UB181818	18 x 18 x 18 Under Body Box	EA	\$540
UB181824	18 x 18 x 24 Under Body Box	EA	\$558
UB181830	18 x 18 x 30 Under Body Box	EA	\$583
UB181836	18 x 18 x 36 Under Body Box	EA	\$674
UB181848	18 x 18 x 48 Under Body Box	EA	\$857
UB181860	18 x 18 x 60 Under Body Box	EA	\$893
UB182036DD	18 x 20 x 36 Under Body Box (Two Drawers)	EA	\$727
TS161372	16 x 13 x 72 Top Side Box	EA	\$966
TS161388	16 x 13 x 88 Top Side Box	EA	\$1,094
TS161396	16 x 13 x 96 Top Side Box	EA	\$1,113
TS181680	18 x 16 x 80 Top Side Box	EA	\$1,496
TS181690	18 x 16 x 90 Top Side Box	EA	\$1,277
TS181696	18 x 16 x 96 Top Side Box	EA	\$1,313
FILLER	Filler Strip for Short Tool Box Application	PKG	\$274
SKIRT	Diamond Plate Skirt with Radius Fender Wells –(Includes Rear Apron)	PBF	\$146
BELLYBOX	Belly Box w/ Door 96" Long (Non-Dumping Only) Requires Upgrade to Min 5" Long Sills	EA	\$778
TOOLBOXPREP	Tool Box Framed in with Angle for Bolt-On Application	EA	\$47
Item#	Lights And Headboard Accessories	UOM	Price
4LIGHTV2	Go from 2 Integrated STTL Backup Lights to 4 (2 STTL-2 Backup)	PKG	\$49
STROBES	Oval Amber Strobe Lights (Installed)	SET (2)	\$69
CWL508	Led 4.5"x 2" Utility Flood Light	EA	\$46
CWL504	Led 4.5" Utility Flood Light	EA	\$46
C3068K	Led 13" Spot/Flood Combination Light Bar - 3700 Lumens	EA	\$122
CWL524D	Led 24" Double Row Light Bar	EA	\$183
CWL536D	Led 36" Double Row Light Bar	EA	\$206
CWL552D	Led 52" Double Row Light Bar	EA	\$301
AMBERTS	6" Oval Amber LED Turn Signal (for Foreign Vehicles)	PR	\$83
5671	Sliding Cargo Stops (Fit All Headache Racks)	SET (2)	\$53
36241	8" x 24" Center Mount Light Bracket	EA	\$63
36061	8" x 8" Top Mount Light Brackets	SET (2)	\$63
36261	6" x 6" Angle Mount Light Brackets	SET (2)	\$63
26001	Sliding D-Rings - Black Only	SET (2)	\$42
26003	Antenna Bracket	EA	\$24
SQBOLT	1" Stainless Steel Square Bolt for Track	EA	\$7
SQBOLT125	1 ¼" Stainless Steel Square Bolt for Track	EA	\$9
Item#	Flooring Options	UOM	Price
RUMBER	Rumber Floor (Includes upgrade to 2"x5" Perimeter Frame)	PBF	\$174
WOODFLOOR	2" PT Tongue-and-Groove Wood Flooring (Includes upgrade to 2"x5" Perimeter Frame)	PBF	\$47
APITONG	Shiplap Apitong Flooring (Includes upgrade to 2"x4" Perimeter Frame)	PBF	\$77

DX HAULER BODY

Base Unit Features:

- 18,000 lbs. 2" receiver hitch with 7-way receptacle
- 2" x 4" box tube steel sub frame
- 3 ½" x 3 ½" integrated steel rear bumper
- Fully powder coated steel sub frame
- 6005 T6 aluminum G tube main frame
- Extruded aluminum flooring
- 6005 T6 2" x 3" box tube cross members
- Headboard with Glide Track
- Stake pockets and rub rails on sides and rear
- Mounting kit included
- Smooth Mill Finish 3/16" Headboard Wings
- Single Integrated STT/Backup Light-Rubber Mounted



Base Model Hauler



Fully Skirted Hauler with Optional Rear Tool Boxes, Headboard Lights and GN Hatch

Fully Skirted Package Description

Skirting Package includes:

- Rear Apron
- 2 Front Tool Boxes
- Full Side Skirting
- Cast Aluminum Fuel Filler (2 where required)
- Cast Aluminum License Plate Holder
- Aluminum Fender Flares



Base Hauler with Optional Apron/Lights

HAULER DELETE BASE MODELS

For Overall Measurement: Add 5" to width and 2.5" to length for Stake Pockets and Rub Rails

Model	Fit	Deck W x L (incl. HB)	Long Sills	Base Price
HB08407DXF	Ford '99-'16	81" x 84"	37.5"	\$3,014
HB08407DXF17	Ford 17'-Current	81" x 87"	38"	\$3,014
HB08407DXG	GM '99-Current	81" x 84"	42"	\$3,014
HB08407DXD	Ram '09-Current	81" x 84"	42"	\$3,014
HB08485DXF	Ford '99-'16	81" x 99"	37.5"	\$3,042
HB08485DXF17	Ford 17'-Current	81" x 105"	38"	\$3,042
HB08485DXG	GM '99-Current	81" x 99"	42"	\$3,042
HB08485DXD	Ram '09-Current	81" x 99"	42"	\$3,042
HB09785DXF	Ford '99-'16 (Dually)	95" x 99"	37.5"	\$3,191
HB09785DXF17	Ford 17'-Current (Dually)	95" x 105"	38"	\$3,191
HB09785DXG	GM '99-Current (Dually)	92" x 99"	42"	\$3,191
HB09785DXD	Ram '09-Current (Dually)	95" x 99"	42"	\$3,191
HB09707DXF	Ford '99-'16 Short Bed (Dually)	95"x84"	37.5"	\$3,191
HB09707DXF17	Ford '17- Current Short Bed (Dually)	95"x87"	38"	\$3,191
HB09707DXD	Ram '09-Current Short Bed (Dually)	95"x84"	42"	\$3,191

CAB CHASSIS BASE MODELS

For Overall Measurement: Add 5" to width and 2.5" to length for Stake Pockets and Rub Rails

Model	Fit	Deck W x L (incl. HB)	Long Sills	Base Price
HB08495DX	Ford/Dodge	81" x 114"	34"	\$3,014
HB09795DX	Ford/Dodge/GM DRW	92" x 114"	34"	\$3,042
HB09711DX	Ford/Dodge/GM DRW	92" x 132"	34"	\$3,556

DX HAULER BODY OPTIONS

HAULER BODY OPTIONS			
Item#	Description	UOM	Price
DDRAIL	Drop Down Rail Kit - Mill Finish	Set (2)	\$280
2ATB	Two additional tool boxes in rear	PKG	\$532
HBSIDEBOARD10	Hauler Body 10" Side Boards	PBF	\$75
HBTA10100	Hauler Body 10" Tail Board	EA	\$386
HBSIDEBOARD16	Hauler Body 16" Side Boards	PBF	\$118
HBTA16100	Hauler Body 16" Tail Board	EA	\$488
GNHNCOVER	Gooseneck Hatch, Hitch, and Electrical	PKG	\$448
25RECEIVER	Upgrade to 2.5" Rear Receiver	EA	\$83
RING4KSS	Recessed SS D-RING, Spring loaded, 4.4k Rating	EA	\$50
MILLTAILAPRON	Mill Finish Tail Skirt Apron	EA	\$297
DPTAILAPRON	Diamond Plate Tail Skirt Apron	EA	\$350
HAULERLIGHTEDHEAD	Hauler Body Lighted Headboard -2 Integrated STT/Backup LEDs	EA	\$120
MILLSKIRTPKG-9	9' Smooth Side Fully Skirted	PKG	\$1,928
DPSKIRTPKG-9	9' Diamond Plate Fully Skirted	PKG	\$2,008
MILLSKIRTPKG-11	11' Smooth Side Fully Skirted	PKG	\$2,422
DPSKIRTPKG-11	11' Diamond Plate Fully Skirted	PKG	\$2,535
HBREMOVABLEHB	Hauler Body Removable Headboard	EA	\$175

SMOOTH SIDE LANDSCAPE BODY

Smooth Side Landscape Standard Features:

- ALL ALUMINUM Box Tube Frame
- Heavy Duty Long Sills & Light Bar - 2" x 6"
- Cross members at 12" OC - 2" x 3"
- Premium B-Tube Perimeter Frame
- Heavy Duty Extruded Aluminum Flooring
- Aluminum Sheet Headboard with Expanded Metal Window
- Aluminum Sheet Sides
- Heavy Duty Rear Corner Posts 3" x 3"
- Barn Doors (sheet metal) w/Polished Stainless Steel Locking Bar
- Smooth Bonded Exterior-No Stitch Welds
- Flat Bar Tie Rail 2" x 1/4"
- LED Lights Fully Pre-Wired Inside Box Tube
- OEM Plug & Play Wiring Harnesses *(Adaptors sold separately)



SMOOTH SIDE LANDSCAPE BODY MODELS

Model	Overall W x L	Side Height	Weight (Lbs.)	Base Price		
LS0848534SS	81" x 102"	34"	725	\$7,653		
LS0848542SS	81" x 102"	42"	765	\$7,721		
LS0969542SS	96" x 114"	42"	930	\$8,581		
LS0961242SS	96" x 144"	42"	1098	\$9,905		
LS0961442SS	96" x 168"	42"	1281	\$11,797		
LS0969548SS	96" x 114"	48"	955	\$8,984		
LS0961248SS	96" x 144"	48"	998	\$10,129		
LS0961448SS	96" x 168"	48"	1143	\$12,227		
LS0961648SS	96"X192"	48"	1296	\$13,506		

EXTRUDED LANDSCAPE BODY

Extruded Landscape Standard Features:

- ALL ALUMINUM Box Tube Frame
 - Heavy Duty Long Sills & Light Bar - 2" x 6"
 - Cross members at 12" OC - 2" x 3"
 - Premium B-Tube Perimeter Frame
 - Tongue and Groove Extruded Aluminum Flooring
 - Extruded Aluminum Headboard with Expanded Metal Window
 - Solid Extruded Sides with Dirt Shedding Extrusion
 - Heavy Duty Rear Corner Posts 3" x 3"
 - Barn Doors with Polished Stainless Steel Locking Bar
 - Flat Bar Tie Rail 2" x 1/4"
 - LED Lights Fully Pre-Wired Inside Box Tube
 - OEM Plug & Play Wiring Harnesses
- *(Adaptors sold separately)*



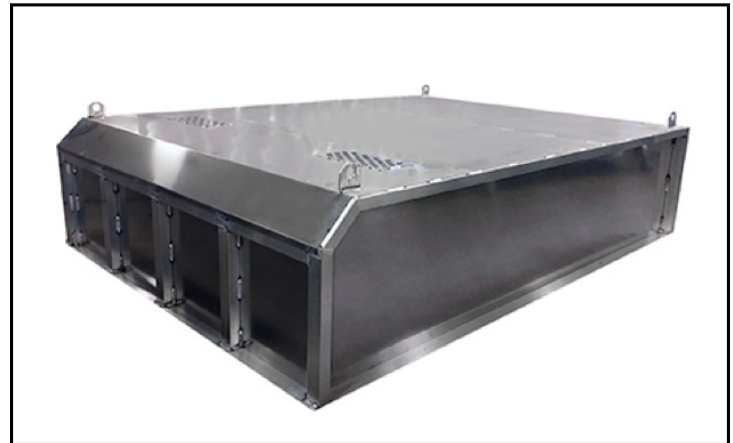
EXTRUDED ALUMINUM LANDSCAPE BODY MODELS						
Model	Overall W x L	Side Height	Weight (Lbs.)	Base Price		
LS0848534E	81" x 102"	34"	725	\$7,653		
LS0848542E	81" x 102"	42"	765	\$7,721		
LS0959542E	96" x 114"	42"	930	\$8,581		
LS0951242E	96" x 144"	42"	1098	\$9,905		
LS0951442E	96" x 168"	42"	1281	\$11,797		
LS0959550E	96" x 114"	50"	955	\$8,984		
LS0951250E	96" x 144"	50"	998	\$10,129		
LS0951450E	96" x 168"	50"	1143	\$12,227		
LS0961650E	96"X192"	50"	1296	\$13,506		

LANDSCAPE BODY EXPANDED OPTIONS/ACCESSORIES LIST			
Frame Options			
Item#	Description	UOM	Price
DHPREP-SOL	Dump Hoist Prep, Steel Long Sills Overlay - Shipped Loose	SET (4)	\$211
DHPREP-SOI	Dump Hoist Prep, Steel Long Sills Overlay - Installed **Dealer to Supply Measurements**	SET (4)	\$274
CS615T-9 EMDA	9' Champion Scissor Hoist- Push Control Double Acting - Installed	EA	\$2,870
CS615T-11 EMDA	12' Champion Scissor Hoist- Push Control Double Acting - Installed	EA	\$2,953
CS620T-15 EMDA	15' Champion Scissor Hoist- Push Control Double Acting - Installed	EA	\$3,849
CS615T-9 EMDA-L	9' Champion Scissor Hoist- Push Control Double Acting - Shipped Loose	EA	\$2,616
CS615T-11 EMDA-L	12' Champion Scissor Hoist- Push Control Double Acting - Shipped Loose	EA	\$2,696
CS620T-15 EMDA-L	15' Champion Scissor Hoist- Push Control Double Acting - Shipped Loose	EA	\$3,485
CABSHIELD12	12" Cab Shield .125 W/.188 Ears Mill Finish Aluminum	EA	\$521
CABSHIELD24	24" Cab Shield .125 W/.188 Ears Mill Finish Aluminum	EA	\$598
CABSHIELD36	36" Cab Shield .188 Mill Finish Aluminum	EA	\$673
CABSHIELD42	42" Cab Shield .188 Mill Finish Aluminum	EA	\$718
TARPCOVER	6" Extruded Aluminum Tarp Cover	EA	\$193
Item#	Headboard And Other Options	UOM	Price
STROBES	6" Amber Oval Strobes	SET (2)	\$69
WIRESTUB	Stub Wires in Headboard for Strobe Light	PKG	\$91
LHBOO1	4 Extra Lights in Headboard, 2 STT, 2 Backup	SET (4)	\$235
LBHOO2	2 Integrated, Rubber Mount, SST/Backup LED's in Headboard	SET (2)	\$204
FENKITSRW	Single Wheel Fender Kit	EA	\$363
FENKITDRW	Dually Fender Kit	EA	\$455
RING4KSS	Recessed SS D-RING, Spring Loaded, 4.4k Rating	EA	\$50
TAILGATE	Two-Way Dumping Tailgate w/SS Spring Latches	EA	\$1,250
REMOVABLESIDES	Removable Sides	SET (2)	\$616
EXTRLINER	Extruded Aluminum Interior Wall Liner (Up to 48" Height)	PBF	\$136
GRABHANDLE	Aluminum Grab Handle	EA	\$65
52SIDEDOOR	52" Side Door with Locking Bar	EA	\$500
188LSSIDES	Upgrade to 3/16" Thick Sides on SS Landscape	PBF	\$84

CHIPPER TOP

Chipper Top Standard Features:

- All aluminum construction
- Bolts to top rail of Landscape body
- Extruded aluminum frame
- Smooth Side 1/8" Mill finish sides
- Heavy duty 3/16" Front wall sheet
- Punched ventilation in roof
- Optional (order at no charge) Back 4' of roof in expanded metal
- Lifting hooks (4)



CHIPPER TOPS			
Item#	Description	UOM	Price
CT09695	96"W x 114"L x 24"H Bolt-On Chipper/Leaf Top	EA	\$3,479
CT09612	96"W x 144"L x 24"H Bolt-On Chipper/Leaf Top	EA	\$3,969

CHIPPER TOP OPTIONS			
Item#	Description	UOM	Price
CTDOOR	Door to convert landscape body chipper top to landscape body leaf top	EA	\$545
CTHATCH	Hatch cover for leaf blower nozzle opening in door (ships loose with door)	EA	\$182

UNIVERSAL CHIPPER/LEAF BOX

Universal Chipper/Leaf Box Standard Features:

- All aluminum construction
- Bolts through the floor of any dumping body (measure to verify-see dimensions below)
- Extruded aluminum frame with vertical posts
- Stainless Steel locking bars
- Mill finish aluminum side sheets 1/8"
- Heavy duty 3/16" Front wall sheet
- Punched ventilation in roof
- Optional (Order at no charge) Back 4' of roof in expanded metal
- Lifting hooks (4)
- Extruded aluminum post & sheet door with aluminum hinges with stainless pins
- No Floor – utilizes truck body floor



Chipper Box (Shown with Door Propped Open)

CHIPPER BOX			
Item#	Description	UOM	Price
CB07895	78"W x 106"L x 60"H Universal Chipper/Leaf Box with Full-size Top-hinged Door (Bolts through Floor of Any Dumping Body) No Floor in Box. Utilizes truck body floor.	EA	\$6,292

SMOOTH SIDE DUMP BODY

Smooth Side Dump Body Specifications:

- ALL ALUMINUM Construction
- Super Heavy Duty 2" x 6" x 1/4" Long Sills
- Extruded 3/16" Uni-body Floor with 2" OC Bracing
- Double Walled (1/8" Outside, 3/16" Inside) Aluminum Walls for superior strength & appearance
- Stainless Tailgate Actuator Hardware & Fasteners
- LED Lights Fully Pre-wired Inside Box Tube
- OEM Plug & Play Wiring Harnesses
 *(Adaptors sold separately)
- Standard 17" Aluminum Cab Shield with Punched Window



NOTE: Does Not Include Hoist.

SS DUMP BODY MODELS							
Model	Overall W x L	Side Height	Tailgate Height	Cubic Yard Capacity	Weight (Lbs.)	Base Price	
DB0969514SS	96" x 111"	14"	21"	2.88	840	\$7,272	
DB0969520SS	96" x 111"	20"	27"	4.11	908	\$7,622	
DB0961214SS	96" x 141"	14"	21"	3.67	995	\$8,544	
DB0961220SS	96" x 141"	20"	27"	5.22	1073	\$8,964	

SS DUMP BODY OPTIONS			
Item#	Description	UOM	Price
STROBES	6" Amber Oval Strobes (Per Set)	SET (2)	\$69
COALDOOR	Aluminum Coal Door (Requires 27" Tailgate)	EA	\$819
27TAGATE	Upgrade to 27" Tailgate (14" Sides Only)	EA	\$169
DBFDSIDES	Fold Down Sides w/SS Spring Latches	SET (2)	\$1,076
TARPCOVER	Extruded Aluminum 6' Radius Tarp Cover	EA	\$193
MANUALTARP	Manual Tarp Cover System	PKG	\$474
CS615T-9 EMDA-L	9' Champion Scissor Hoist - Push Control Double Acting - Shipped Loose	EA	\$2,616
CS615T-11 EMDA-L	12' Champion Scissor Hoist - Push Control Double Acting - Shipped Loose	EA	\$2,696
CS615T-9 EMDA	9' Champion Scissor Hoist- Push Control Double Acting - Installed	EA	\$2,870
CS615T-11 EMDA	12' Champion Scissor Hoist- Push Control Double Acting - Installed	EA	\$2,953
DHPREP-SOL	Dump Hoist Prep, Steel Long Sills Overlay - Shipped Loose	SET (4)	\$211
DHPREP-SOI	Dump Hoist Prep, Steel Long Sills Overlay - Installed **Dealer to Supply Measurements**	SET (4)	\$274
SBEXTENSIONS	Aluminum Diamond Plate Side Board Extensions	SET (2)	\$1,848
SURFACEHDDRING	Surface Mount Stainless Steel Heavy Duty D-Ring	EA	\$105

HD DUMP BODY

HD Dump Body Specifications:

- ALL ALUMINUM Construction
- Super Heavy Duty 2" x 6" Long Sills
- Extruded HD Uni-body Floor with 2" OC Bracing
- Extruded Interlocking Walls and Tailgate with Honeycomb Construction
- Stainless Tailgate Actuator Hardware & Fasteners
- LED Lights Fully Pre-Wired Inside Box Tube
- OEM Plug & Play Wiring Harnesses
**(Adaptors sold separately)*
- Standard 17" Aluminum Cab Shield with Punched Window
- Extruded Double Wall Top Protective Rail
- Extruded Lower Side Skirting



NOTE: Does Not Include Hoist.

HD DUMP BODY MODELS							
Model	Overall W x L	Side Height	Tailgate Height	Cubic Yard Capacity	Weight (Lbs.)	Base Price	
DB0969514	96" x 111"	14"	21"	2.88	900	\$6,948	
DB0969520	96" x 111"	20"	27"	4.11	988	\$7,298	
DB0961214	96" x 141"	14"	21"	3.67	1075	\$8,164	
DB0961220	96" x 141"	20"	27"	5.22	1143	\$8,584	

HD DUMP BODY OPTIONS			
Item#	Description	UOM	Price
STROBES	6" Amber Oval Strobes (Per Set)	SET (2)	\$69
COALDOOR	Aluminum Coal Door (Requires 27" Tailgate)	EA	\$819
27TAGATE	Upgrade to 27" Tailgate (14" Sides Only)	EA	\$169
DBFDSIDES	Fold Down Sides w/SS Spring Latches	SET (2)	\$1,076
TARPCOVER	Extruded Aluminum 6' Radius Tarp Cover	EA	\$193
MANUALTARP	Manual Tarp Cover System	PKG	\$474
CS615T-9 EMDA-L	9' Champion Scissor Hoist - Push Control Double Acting - Shipped Loose	EA	\$2,616
CS615T-11 EMDA-L	12' Champion Scissor Hoist - Push Control Double Acting - Shipped Loose	EA	\$2,696
CS615T-9 EMDA	9' Champion Scissor Hoist- Push Control Double Acting - Installed	EA	\$2,870
CS615T-11 EMDA	12' Champion Scissor Hoist- Push Control Double Acting - Installed	EA	\$2,953
DHPREP-SOL	Dump Hoist Prep, Steel Long Sills Overlay - Shipped Loose	SET (4)	\$211
DHPREP-SOI	Dump Hoist Prep, Steel Long Sills Overlay - Installed **Dealer to Supply Measurements**	SET (4)	\$274
SBEXTENSIONS	Aluminum Diamond Plate Side Board Extensions	SET (2)	\$1,848
SURFACEHDDRING	Surface Mount Stainless Steel Heavy Duty D-Ring	EA	\$105



5/7 YARD DUMP - BODY ONLY (No Hoist)

5/7 Yard Dump Body Specifications:

- ALL ALUMINUM Construction
- Super Heavy Duty 2" x 8" x 1/4" Long Sills
- Extruded 3/16" Uni-body Floor with 1.69" OC Bracing
- Double Walled (3/16" Outside, 3/16" Inside) Aluminum
- Walls for superior strength & appearance
- Stainless Tailgate Actuator Hardware & Fasteners
- LED Lights Fully Pre-Wired Inside Box Tube
- OEM Plug & Play Wiring Harnesses
 *(Adaptors sold separately)
- Cab Shield IS TRUCK SPECIFIC



Shown with optional tarp

NOTE: Add For Hoist

HD DUMP BODY MODELS					
Model	Overall W x L	Interior Side Height	Tailgate Height	Weight (Lbs.)	Base Price
DB0961030SS	96" x 124"	30"	35"	1548	\$11,956
DB0961230SS	96" x 148"	30"	35"	1695	\$13,616
DB0961430SS	96" x 172"	30"	35"	1842	\$15,278

DURAMAG® SERVICE BODIES

S Series (Swing Doors)



S Series Service Body Specifications:

- Available in Both Fast Install Custom Fits or Universal Fits
- All-Aluminum—Understructure Extruded Box Tube Construction
- Fully Welded Construction—No Bolts to Come Loose
- Extreme Duty .625 Interlocking Extruded Flooring
- Heavy Slam Latch Tailgate
- Inner Bed Walls and Exterior Top of Compartments - 1/8" Diamond Plate
- Welded Fender Flares for Superior Strength and Rigidity
- Tread Plate Splash Guards on Front— ALL Models
- 6 Swing Doors - T Handle with Tamper Resistant Stainless Steel Rivets
- Continuous HD Aluminum Piano Hinge
- Compartments with Adjustable Shelving in Front, Middle and Rear (One Shelf with Dividers in Each Compartment)
- Pass Through Panel Between Rear & Center Compartments
- Sand-blasted Metal Preparation (not inferior wash/zinc phosphate)
- Powder Coated White, Black or GM/Dodge Red or Current Ford Red
- Loose Parts Box: ** Loose Parts Include LED Marker Lights (where required), LED Penny lights for Compartments, Ultra-Thin 6" LED STT/BU Body Lights with Full Body Wiring Harness, OEM Plug & Play Wire Harness - Body End Only
*(Adaptors Sold Separately)
- Single Round Fuel Filler - **Shipped Loose

Delete Single Rear Wheel SWING DOORS			
Model	Description	Base Price	
SB-S-42G-STD-SRW	7' 42" CA 80"x 84.5" GM Single Rear Wheel	\$7,833	
SB-S-40F-STD-SRW	7' 40" CA 80"x 84.5" Ford Single Rear Wheel	\$7,833	
SB-S-40D-STD-SRW	7' 40" CA 80"x 84.5" Dodge Single Rear Wheel	\$7,833	
SB-S-56G-STD-SRW	8.5' 56" CA 80"x 104.5" GM Single Rear Wheel	\$7,833	
SB-S-56F-STD-SRW	8.5' 56" CA 80"x 104.5" Ford Single Rear Wheel	\$7,833	
SB-S-56F17-STD-SRW	8.5' 56" CA 80"x 104.5" Ford (17) Single Rear Wheel	\$7,833	
SB-S-56D-STD-SRW	8.5' 56" CA 80"x 104.5" Dodge Single Rear Wheel	\$7,833	
SB-S-56U-STD-SRW	8.5' 56" CA 80"x 104.5" Universal Single Rear Wheel	\$7,833	

Delete Dual Rear Wheel SWING DOORS			
Model	Description	Base Price	
SB-S-56G-STD-DRW	8.5' 56" CA 94"x104.5" GM Dual Rear Wheel	\$8,819	
SB-S-56F-STD-DRW	8.5' 56" CA 94"x104.5" Ford Dual Rear Wheel	\$8,819	
SB-S-56F17-STD-DRW	8.5' 56" CA 94"x104.5" Ford (17) Dual Rear Wheel	\$8,819	
SB-S-56D-STD-DRW	8.5' 56" CA 94"x104.5" Dodge Dual Rear Wheel	\$8,819	
SB-S-56U-STD-DRW	8.5' 56" CA 94"x104.5" Universal Fit Dual Rear Wheel	\$8,819	

CAB CHASSIS SERVICE BODIES

Cab Chassis Single Rear Wheel SWING DOORS			
Model	Description	Base Price	
SB-S-60-STD-SRW	9' 60CA 80"x113" Single Rear Wheel	\$8,819	

Cab Chassis Dual Rear Wheel SWING DOORS			
Model	Description	Base Price	
SB-S-60-STD-DRW	9' 60CA 94"x113" Dual Rear Wheel	\$8,819	
SB-S-84-STD-DRW	11' 84CA 94"x137" Dual Rear Wheel	\$11,017	

DURAMAG® PREMIUM SERVICE BODIES

R Series (Roll Up Doors)



R Series Service Body Specifications:

- Available in Both Fast Install Custom Fits or Universal Fits
- All-Aluminum—Understructure Extruded Box Tube Construction
- Fully Welded Construction—No Bolts to Come Loose
- Extreme Duty .625 Interlocking Extruded Flooring
- Heavy Slam Latch Tailgate
- Inner Bed Walls and Exterior Top of Compartments—1/8" Diamond Plate
- Welded Fender Flares for Superior Strength and Rigidity
- Tread Plate Splash Guards on Front— ALL Models
- 6 Premium Roll-Up Safety Designed Doors - "Most Heavily Water Resistant Door on the Market"
- Compartments with Adjustable Shelving in Front, Middle and Rear (One Shelf with Dividers in Each Compartment)
- Pass Through Panel Between Rear & Center Compartments
- Sand-blasted Metal Preparation (not inferior wash/zinc phosphate)
- Powder Coated White, Black or GM/Dodge Red or Current Ford Red
- Loose Parts Box: **Loose items include LED Marker Lights (where required), LED Penny lights for Compartments, Ultra-Thin 6" LED STT/BU Body Lights with Full Body Wiring Harness, OEM Plug & Play Wire Harness - Body End Only
*(Adaptors Sold Separately)
- Single Round Fuel Filler - **Shipped Loose

Delete Single Rear Wheel ROLL UP DOORS			
Model	Description	Base Price	
SB-R-42G-STD-SRW	7' 42" CA 80"x 84.5" GM Single Rear Wheel	\$10,065	
SB-R-40F-STD-SRW	7' 40" CA 80"x 84.5" Ford Single Rear Wheel	\$10,065	
SB-R-40D-STD-SRW	7' 40" CA 80"x 84.5" Dodge Single Rear Wheel	\$10,065	
SB-R-56G-STD-SRW	8.5' 56" CA 80"x104.5" GM Single Rear Wheel	\$10,065	
SB-R-56F-STD-SRW	8.5' 56" CA 80"x104.5" Ford Single Rear Wheel	\$10,065	
SB-R-56F17-STD-SRW	8.5' 56" CA 80"x104.5" Ford (17) Single Rear Wheel	\$10,065	
SB-R-56D-STD-SRW	8.5' 56" CA 80"x104.5" Dodge Single Rear Wheel	\$10,065	
SB-R-56U-STD-SRW	8.5' 56" CA 80"x 104.5" Universal Single Rear Wheel	\$10,065	

Delete Dual Rear Wheel ROLL UP DOORS			
Model	Description	Base Price	
SB-R-56G-STD-DRW	8.5' 56" CA 94"x104.5" GM Dual Rear Wheel	\$11,059	
SB-R-56F-STD-DRW	8.5' 56" CA 94"x104.5" Ford Dual Rear Wheel	\$11,059	
SB-R-56F17-STD-DRW	8.5' 56" CA 94"x104.5" Ford (17) Dual Rear Wheel	\$11,059	
SB-R-56D-STD-DRW	8.5' 56" CA 94"x104.5" Dodge Dual Rear Wheel	\$11,059	
SB-R-56U-STD-DRW	8.5' 56" CA 80"x104.5" Universal Fit Dual Rear Wheel	\$11,059	

CAB CHASSIS SERVICE BODIES

Cab Chassis Single Rear Wheel ROLL UP DOORS			
Model	Description	Base Price	
SB-R-60-STD-SRW	9' 60CA 80"x113" Single Rear Wheel	\$11,059	

Cab Chassis Dual Rear Wheel ROLL UP DOORS			
Model	Description	Base Price	
SB-R-60-STD-DRW	9' 60CA 94"x113" Dual Rear Wheel	\$11,059	
SB-R-84-STD-DRW	11' 84CA 94"x137" Dual Rear Wheel	\$13,957	

SERVICE BODY OPTIONS			
Item#	Description	UOM	Price
MLSYS	Master Lock System	EA	\$420
ELSYS89	Electric Locks With Key Fob (8'-9' Body)	EA	\$1,295
ELSYS11	Electric Locks With Key Fob (11' Body)	EA	\$1,715
SBSHELF4PK	4 Pack of Additional Shelving	ST	\$386
SBSHELF	Additional Shelving - Specify Size	EA	\$108
RUBBERMOUNT	1/2 x 3" 90 Durometer Rubber 50' Roll	RL	\$168
SHEARALUM	Aluminum Shear Plate, 2 Holes with Film Barrier for Steel	EA	\$6
LITEIT-15	Upgrade Each LED Compartment Lighting to 13" LED STRIP	EA	\$105
PROXSWITCH	Lights On with Door Opening - Proximity Switch/Magnet Required One PER DOOR	EA	\$154

MOUNTING KITS 40" CA			
Item#	Description	UOM	Price
SB-MK-42G	GM Service Body Mounting Kit for Universal 42" CA (Year Specific)	SET	\$209
SB-MK-40F	Ford Service Body Mounting Kit for Universal 40" CA (Year Specific)	EA	\$209
SB-MK-40D	Dodge Service Body Mounting Kit for Universal 40" CA *Varies based on Suspension Package. (Suspension & Year Specific)	EA	\$209

MOUNTING KITS 56" CA			
Item#	Description	UOM	Price
SB-MK-56G	GM Service Body Mounting Kit for Universal 56" CA (Year Specific)	SET	\$209
SB-MK-56F	Ford Service Body Mounting Kit for Universal 56" CA (Year Specific)	EA	\$209
SB-MK-56D	Dodge Service Body Mounting Kit for Universal 56" CA *Varies based on Suspension Package. (Suspension & Year Specific)	EA	\$209

SERVICE BODY CARGO RACKS			
Item#	Description	UOM	Price
REARRACK	Removable Rear Rack (Bolts Through Top of Side Pack)	EA	\$546
CANTILEVER368	36" Cantilever Rack For 8' Bed (Removable Rear & Center Bar)	EA	\$1,126
CANTILEVER369	36" Cantilever Rack For 9' Bed (Removable Rear & Center Bar)	EA	\$1,183
CANTILEVER3611	36" Cantilever Rack For 11' Bed (Removable Rear & Center Bar)	EA	\$1,277
CANTILEVER48EX	Upgrade to 48" Cantilever Rack	EA	\$78
CANTILEVERADD6	Add 6" in overall Height to Cantilever Rack	EA	\$140

BUMPERS - NO LIGHTS			
Item#	Description	UOM	Price
SB-Bumper-SRW	8" Non-Skid Bumper with Tapered Corners, No Lights, Powder Coated	EA	\$455
SB-Bumper-DRW	8" Non-Skid Bumper with Tapered Corners, No Lights, Powder Coated	EA	\$483

BUMPERS - LIGHTED			
Item#	Description	UOM	Price
SB-Bumper-SRW-L	8" Non-Skid Bumper with Tapered Corners, Powder Coated, Loose Light Box: 6" Oval STT/BU Lights & 5 Penny Lights	EA	\$665
SB-Bumper-DRW-L	8" Non-Skid Bumper with Tapered Corners, Powder Coated, Loose Light Box: 6" Oval STT/BU Lights & 5 Penny Lights	EA	\$693

FLIP TOP BOXES			
Item#	Description	UOM	Price
Flip8	Full Length Additional Top Side Box - Flip Top -Welded to Compartment Tops- Adds Approximately 8" to Overall Pack Height	SET	\$1,113
Flip9	Full Length Additional Top Side Box - Flip Top -Welded to Compartment Tops- Adds Approximately 8" to Overall Pack Height	SET	\$1,333
Flip11	Full Length Additional Top Side Box - Flip Top -Welded to Compartment Tops- Adds Approximately 8" to Overall Pack Height	SET	\$1,750

CANOPY TOPS (Height is from Floor of Service Body to outside of roof)			
Item#	Description	UOM	Price
73Canopy	Cab Chassis 60" CA DRW: 73" High (OD) X 92.5" Wide X Body Length Box Delete 56" CA SRW: 73" High (OD) X 78.5" Wide X Body Length Note: Dually 56" CA width is 92.5"	PBF	\$619
63Canopy	Cab Chassis 60" CA DRW: 63" High (OD) X 92.5" Wide X Body Length Box Delete 56" CA SRW: 63" High (OD) X 78.5" Wide X Body Length Note: Dually 56" CA width is 92.5"	PBF	\$605
53Canopy	Cab Chassis 60" CA DRW: 53" High (OD) X 92.5" Wide X Body Length Box Delete 56" CA SRW: 53" High (OD) X 78.5" Wide X Body Length Note: Dually 56" CA width is 92.5"	PBF	\$591

MAGNUM SERVICE BODY RACKS						
Model					Web Retail	Description
48833331SB					\$511	16" Service Body Rack
48833331SBL					\$669	16" Service Body Rack w/Lights
48833331SB-HP					\$511	16" Hollow Point Service Body Rack
48833331SBL-HP					\$669	16" Hollow Point Service Body Rack w/Lights
38833331SB					\$511	18" Service Body Rack
38833331SBL					\$669	18" Service Body Rack w/Lights
38833331SB-HP					\$511	18" Hollow Point Service Body Rack
38833331SBL-HP					\$669	18" Hollow Point Service Body Rack w/Lights
28833331SB					\$511	20" Service Body Rack
28833331SBL					\$669	20" Service Body Rack w/Lights
28833331SB-HP					\$511	20" Hollow Point Service Body Rack
28833331SL-H					\$669	20" Hollow Point Service Body Rack w/Lights
58833331SB					\$511	22" Service Body Rack
58833331SBL					\$669	22" Service Body Rack w/Lights
58833331SB-HP					\$511	22" Hollow Point Service Body Rack
58833331SBL-HP					\$669	22" Hollow Point Service Body Rack w/Lights
18833331SB					\$511	24" Service Body Rack
18833331SBL					\$669	24" Service Body Rack w/Lights
18833331SB-HP					\$511	24" Hollow Point Service Body Rack
18833331SBL-HP					\$669	24" Hollow Point Service Body Rack w/Lights

CUSTOM DESIGNS

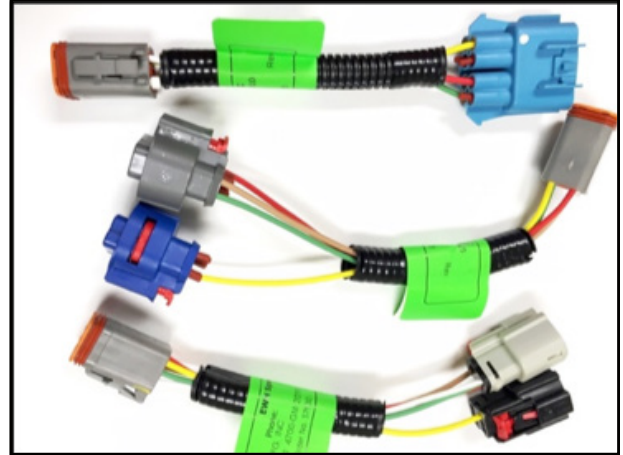
COVERS DESIGN, DRAWING, AND ENGINEERING		
Model	Description	Base Price
CBODYFEE	Custom Body Design/Drawing/Engineering Charge	\$350
CRACKFEE	Custom Rack Design/Drawing/Engineering Charge	\$105

OEM PLUG-N-PLAY WIRING HARNESSES

Adaptors connect our bodies directly to the factory wiring of your truck

Advantages:

- Reduces installation time
- Weather Pack Connector, no exposure to the elements
- Eliminates cutting into factory wiring
- Our adapters plug directly into each of the OEM's factory harnesses



****ADAPTERS SHIP LOOSE**

CAB CHASSIS HARNESSES			
Model	Description	UOM	Price
4700-FRD-CHASS	OEM Chassis Connector- Ford '99-Current	EA	\$26
4700-GM	OEM Chassis Connector - GM - Pre 2015	EA	\$26
4700-GM-2015	OEM Chassis Connector - GM - 2015 Only	EA	\$26
4700-GM-2016	OEM Chassis Connector - GM - 2016-Current	EA	\$26
4700-RAM	OEM Chassis Connector - Dodge 99'- Current	EA	\$26
4700-ISUZU	OEM Chassis Connector - Isuzu	EA	\$26
4700-RESISTOR	10 OHM Resistor Kit	EA	\$23

PICKUP DELETE HARNESSES			
Model	Description	UOM	Price
4700-2017-FBD	OEM Pickup Delete Connector- Ford - 2017-Current	EA	\$26
4700-FRD-TKO	OEM Pickup Delete Connector- Ford -2011-2016	EA	\$26
4700-GM	OEM Pickup Delete Connector - GM - Pre 2015	EA	\$26
4700-GM-2015	OEM Pickup Delete Connector - GM - 2015 Only	EA	\$26
4700-GM-2016	OEM Pickup Delete Connector - GM - 2016-Current	EA	\$26
4700-RESISTOR	10 OHM Resistor Kit	EA	\$23
4700-9707	OEM Pickup Delete Connector 1997-2007 Ford	EA	\$26
4700-0810	OEM Pickup Delete Connector 2008-2010 Ford	EA	\$26
4700-FRD-TKO	With Camera Wires: OEM Pickup Delete Connector 2011-2016 Ford	EA	\$26

COMING SOON...

WATCH FOR OUR NEW RELEASE OF SEMI-CAB RACKS



DESCRIPTION:

The Magnum Cab Rack is built from high strength alloy 6063 aluminum. These racks will be available in both Brite Diamond Plate back panels and Mill Plate (smooth finish) back panels. We will offer everything from the basic rack with no options to racks with Jailhouse windows, chain holders, trays, and tool boxes or logger boxes.

Pricing: Aggressively priced

Rack Specifications			
Model	Size	Weight	Description
CR6870-DP	68"x70"	150lbs	Conventional without sleeper; Diamond Plate Center Panel
CR6870-SP	68"x70"	150lbs	Conventional without sleeper; Smooth Center Panel
CR6876-DP	68"x76"	158lbs	Conventional without sleeper; Diamond Plate Center Panel
CR6876-SP	68"x76"	158lbs	Conventional without sleeper; Smooth Center Panel
CR6880-DP	68"x80"	162lbs	Sleeper with Fairing; Diamond Plate Center Panel
CR6880-SP	68"x80"	162lbs	Sleeper with Fairing; Smooth Center Panel
CR6886-DP	68"x86"	170lbs	With Sleeper; Diamond Plate Center Panel
CR6886-SP	68"x86"	170lbs	With Sleeper; Smooth Center Panel